

DRAKON Visual Language

Tutorial. Part 3:
Simple recipes of beauty

Metre

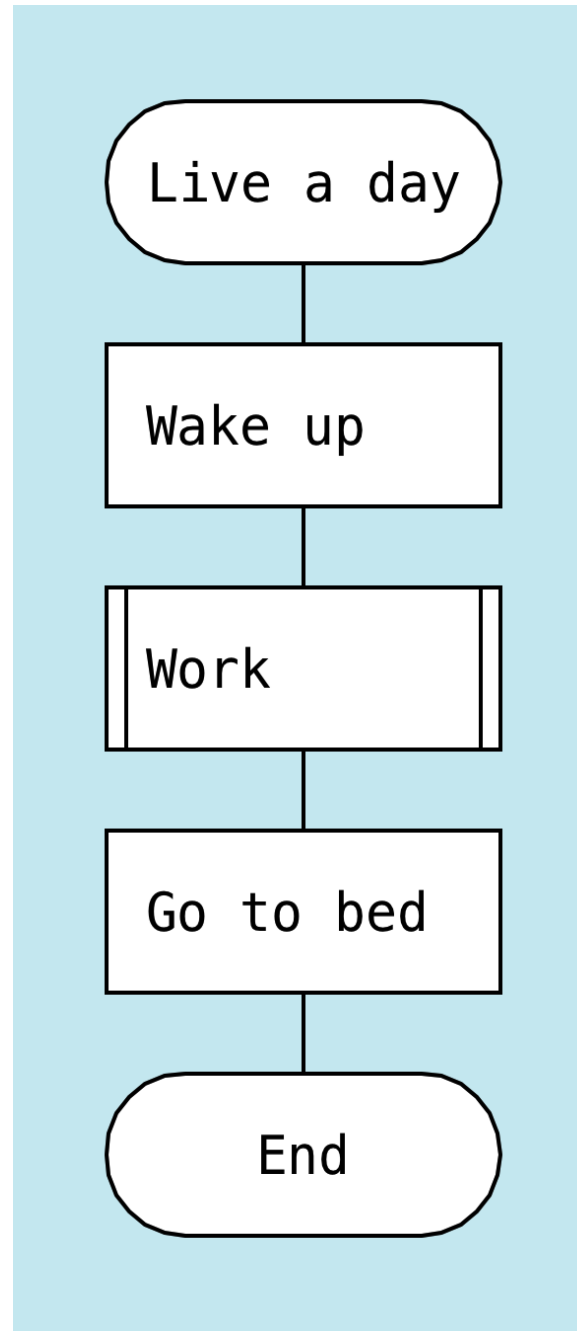
What is “metre”?

In poetry, metre is the basic rhythmic structure of a verse.

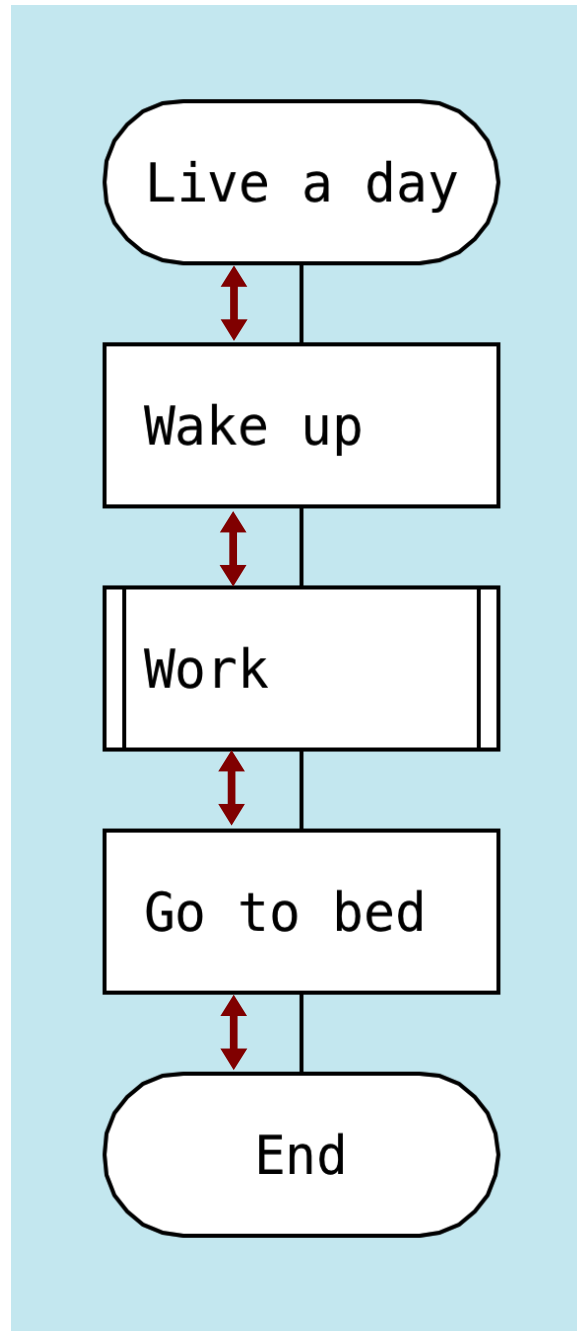
What is “metre”
in graphics?

The rule that prescribes to have the same distance between any two neighboring elements.

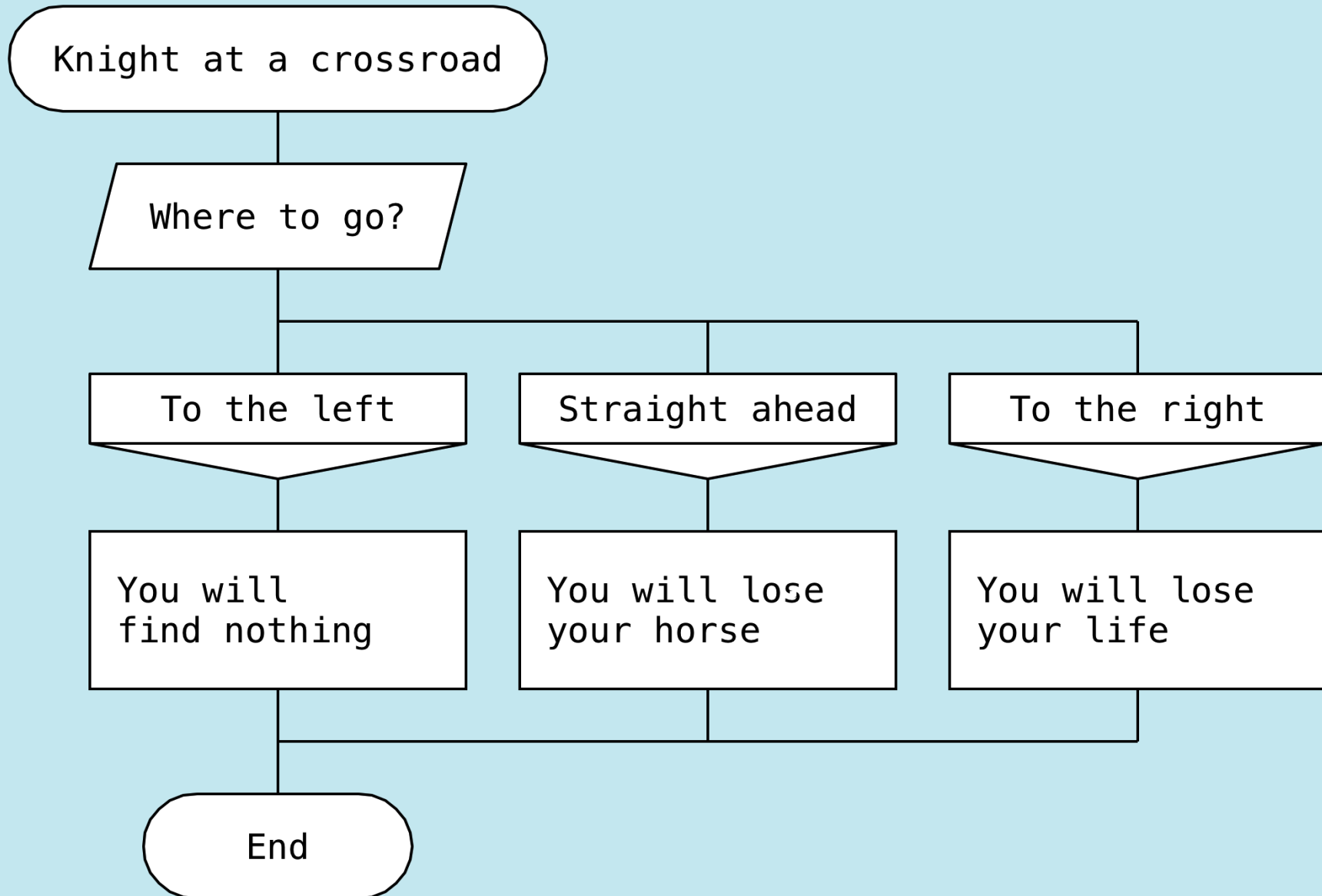
Metre: the same distance between neighboring elements



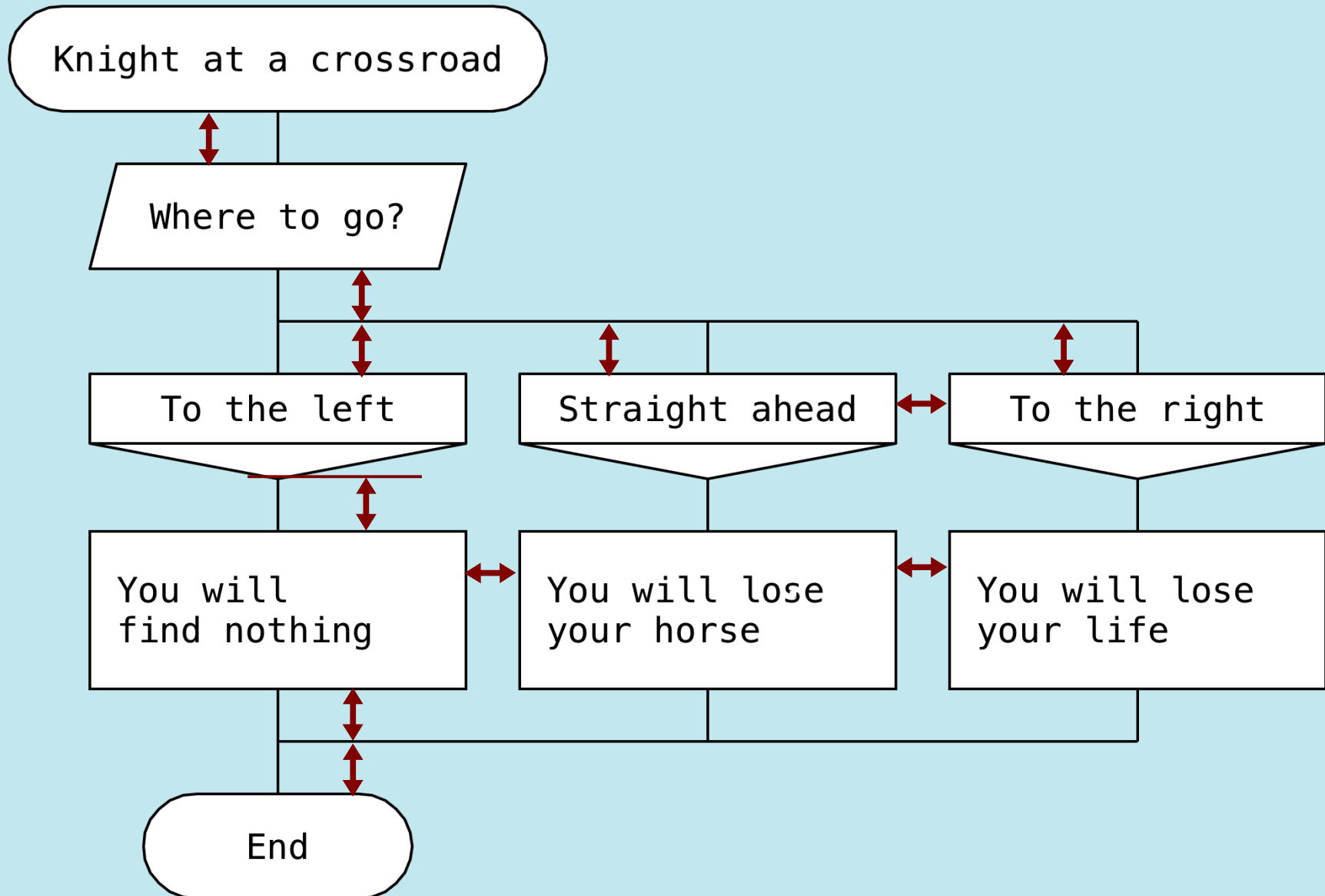
Metre: the same distance between neighboring elements



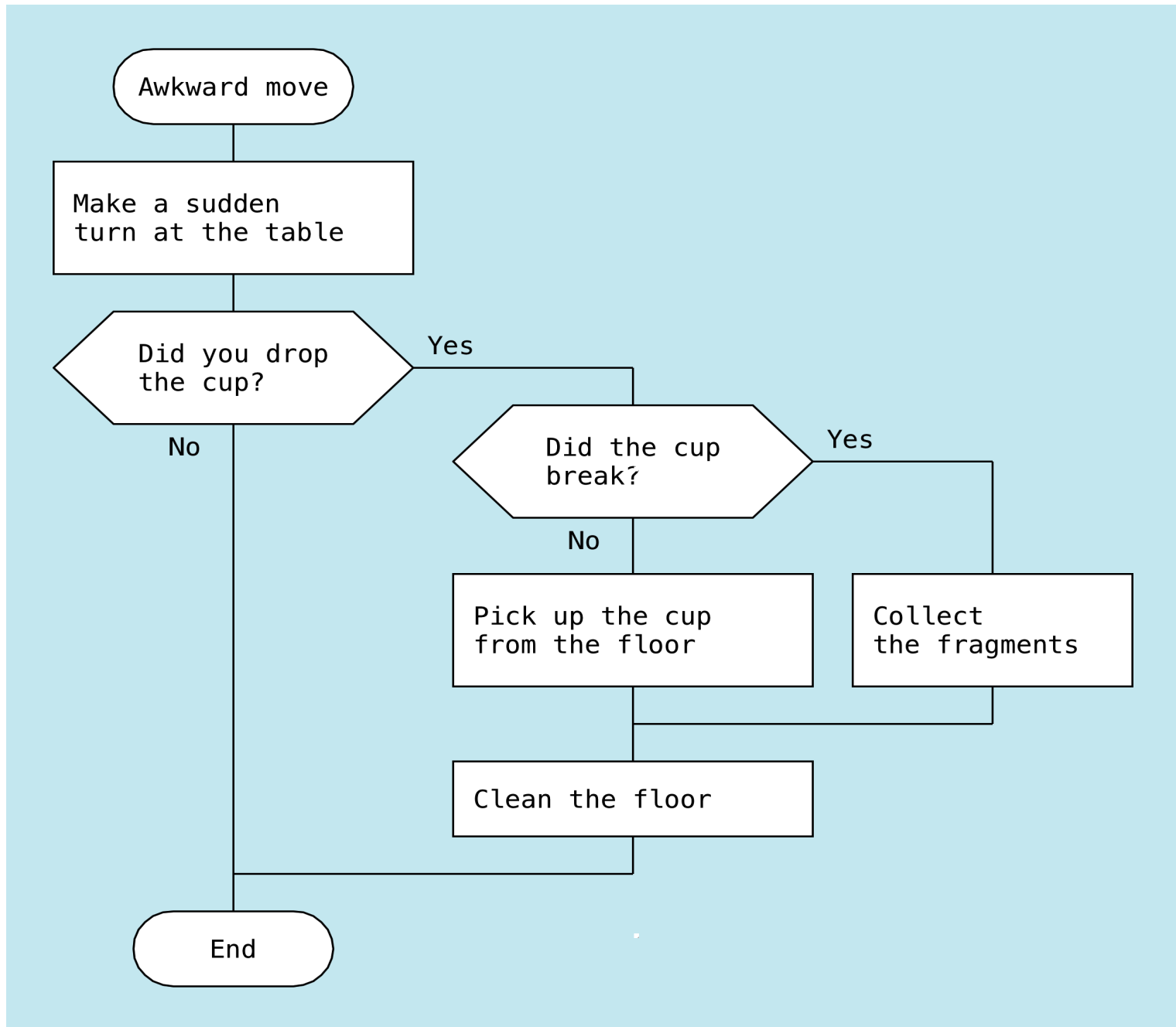
Metre: the same distance between neighboring elements



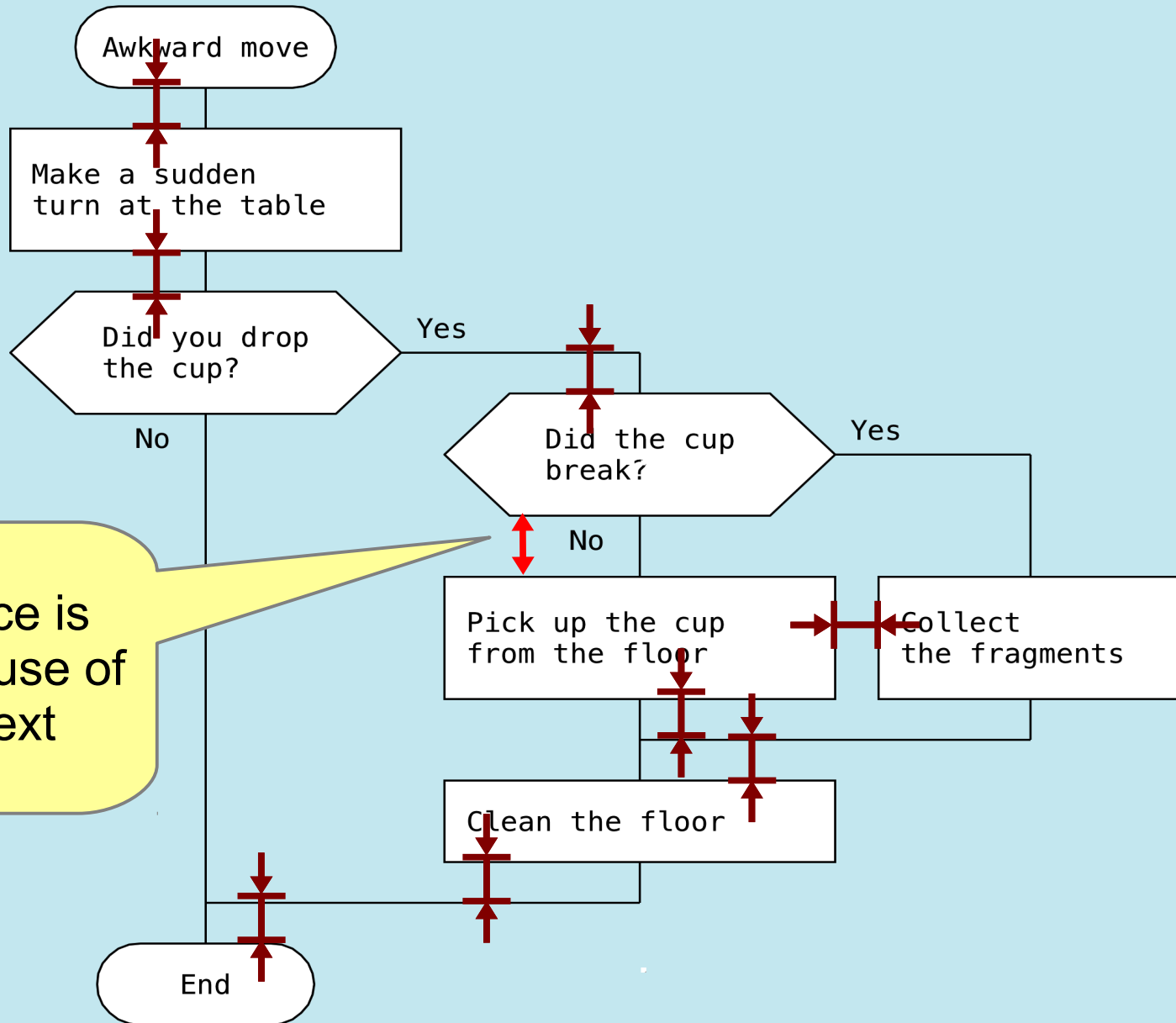
Metre: the same distance between neighboring elements



Metre: the same distance between neighboring elements



Metre: the same distance between neighboring elements



This distance is greater because of the "No" text

Metre is good because

- It brings style into the diagram
- It creates visually pleasant order

Metre is an easy way
to make the diagram
look professional

Rhythm

What is “rhythm”?

The arrangement of musical sounds in time.

What is “rhythm” on a DRAKON chart?

The rule that prescribes increased distance between silhouette branches.

Rhythm

What is “rhythm”?

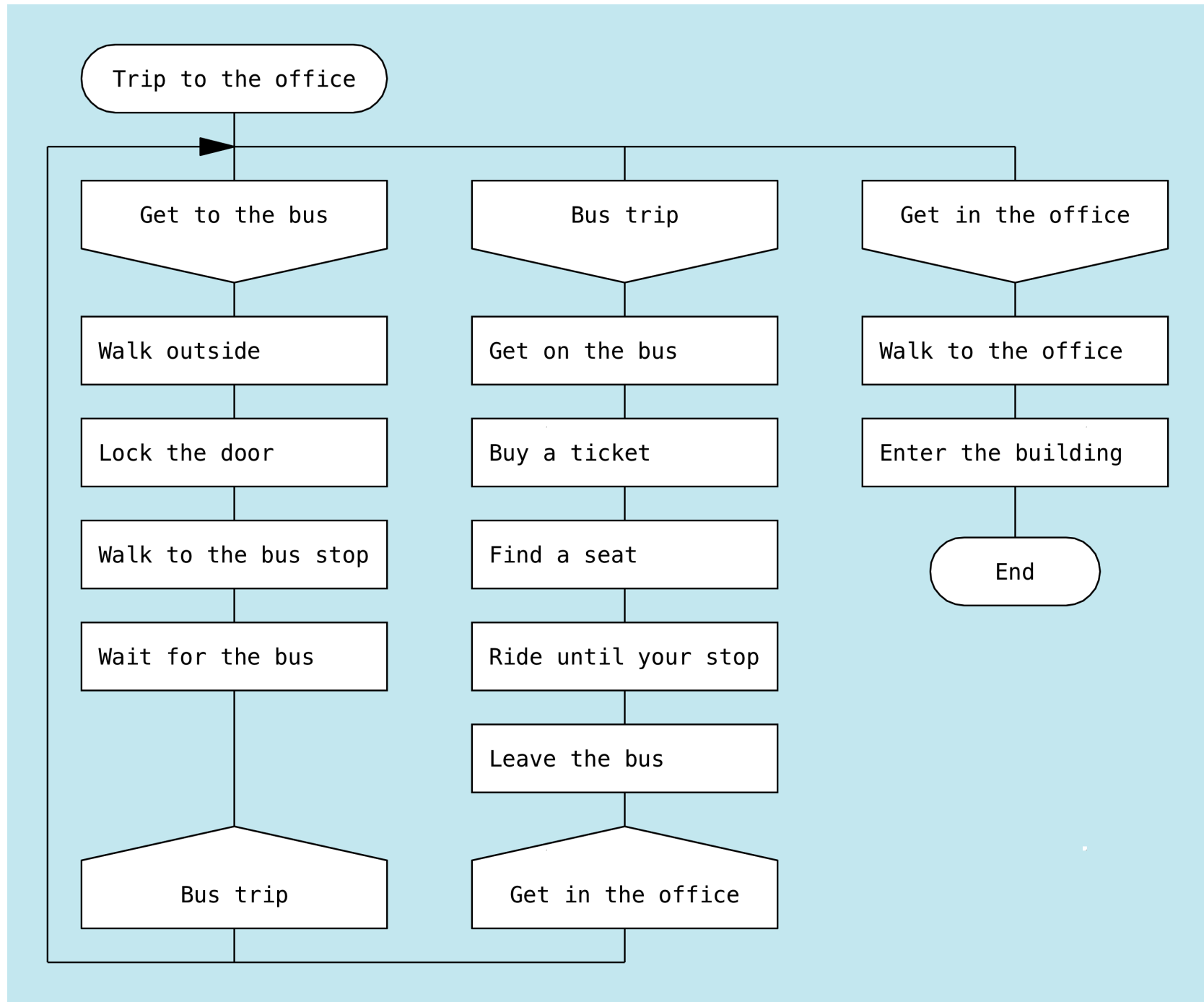
The arrangement of musical sounds in time.

What is “rhythm” on a DRAKON chart?

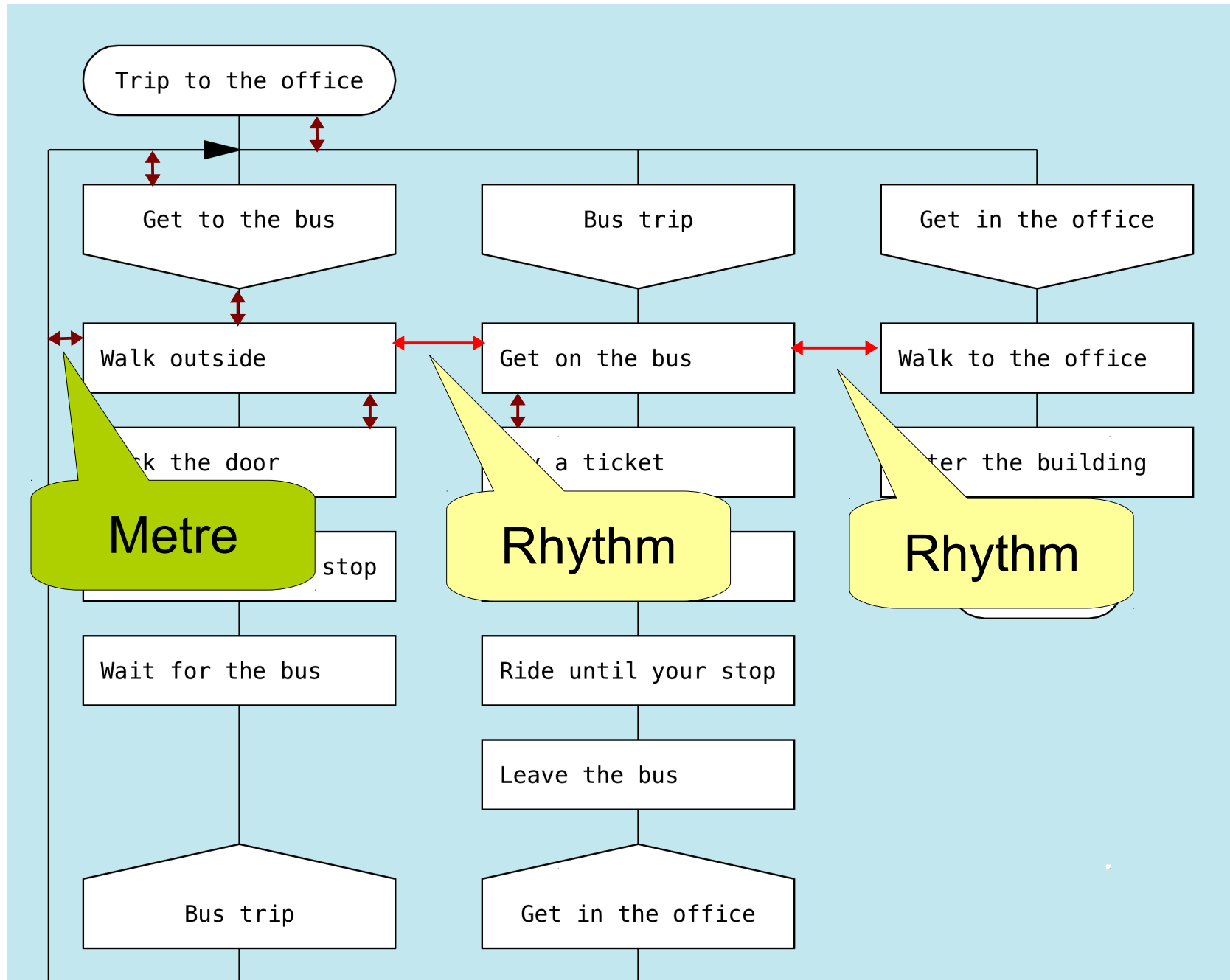
The rule that prescribes increased distance between silhouette branches.

The arrangement of branches in space

Rhythm is 2-3 times greater than metre



Rhythm is 2-3 times greater than metre



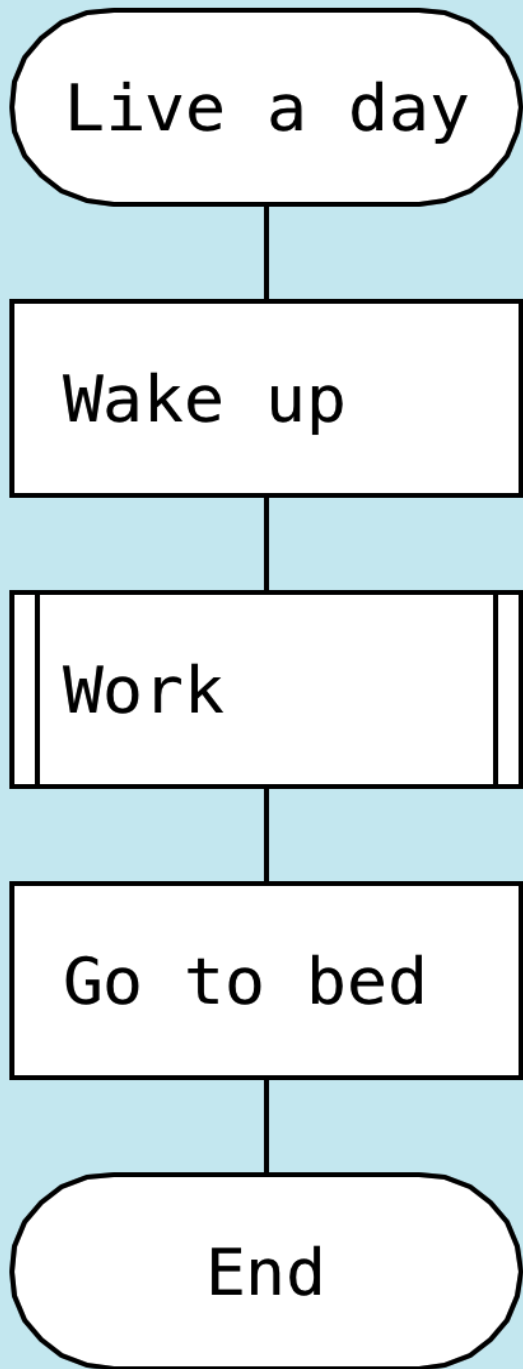
Rhythm

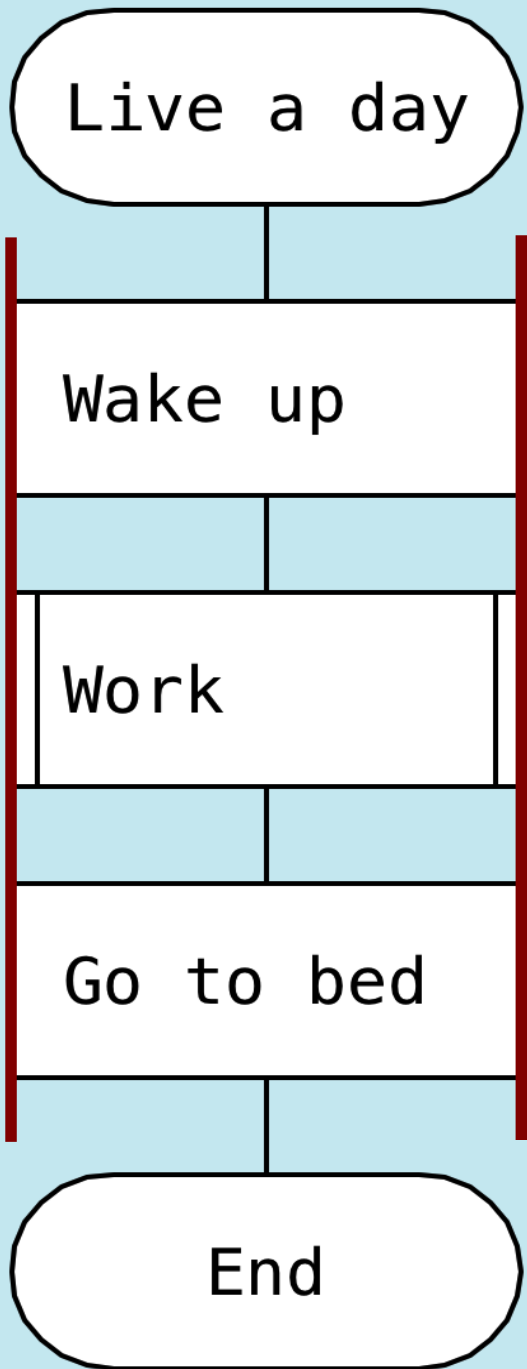
- Clearly separates branches.
- When there is rhythm,
just a quick glance on the DRAKON chart is
enough to see the branches.

The same width of icons on a skewer

Why do all icons on a skewer have to be of the same width?

- The skewer looks like a single entity
- No icons pop out. The variation of width does not distract the reader

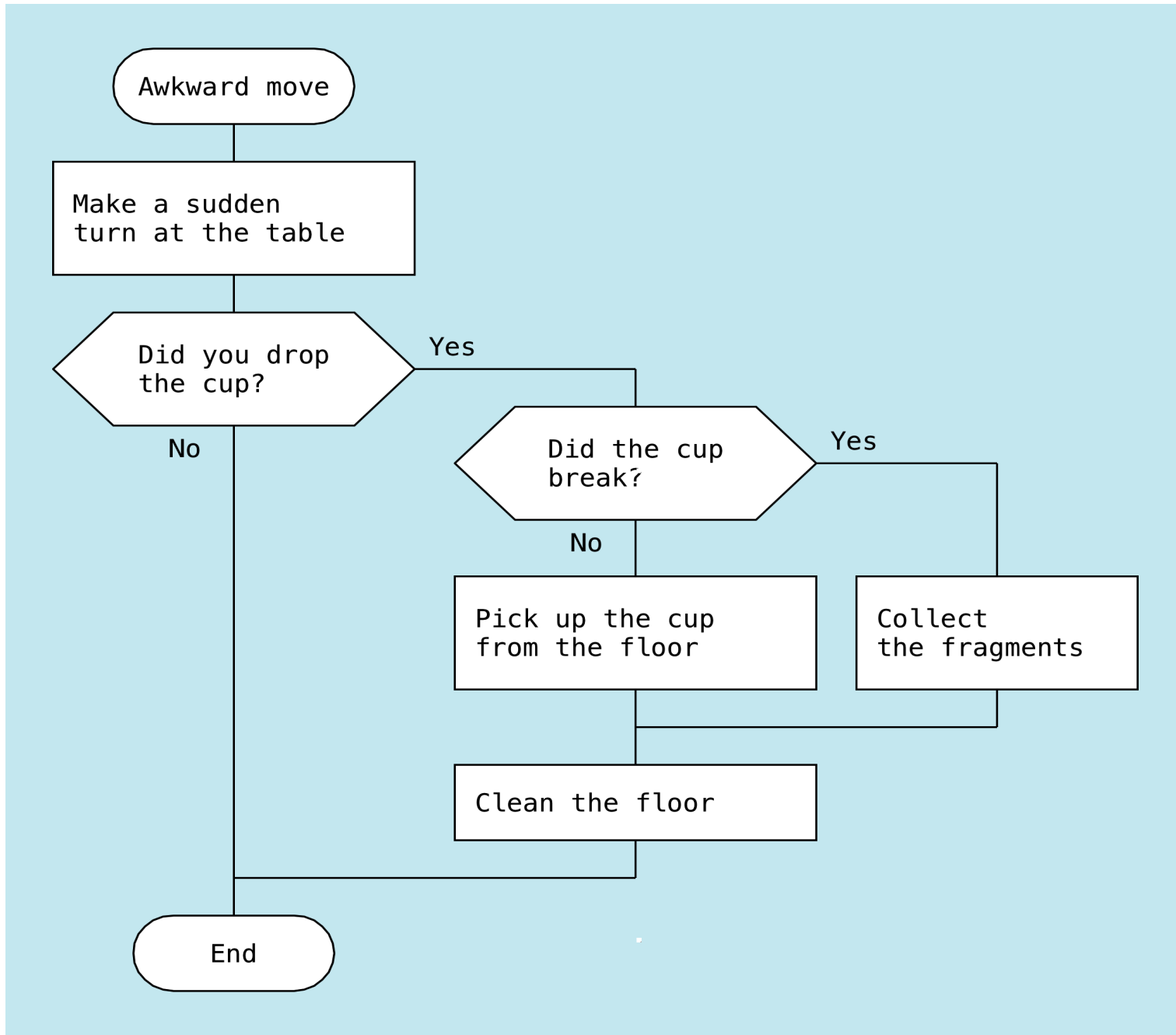




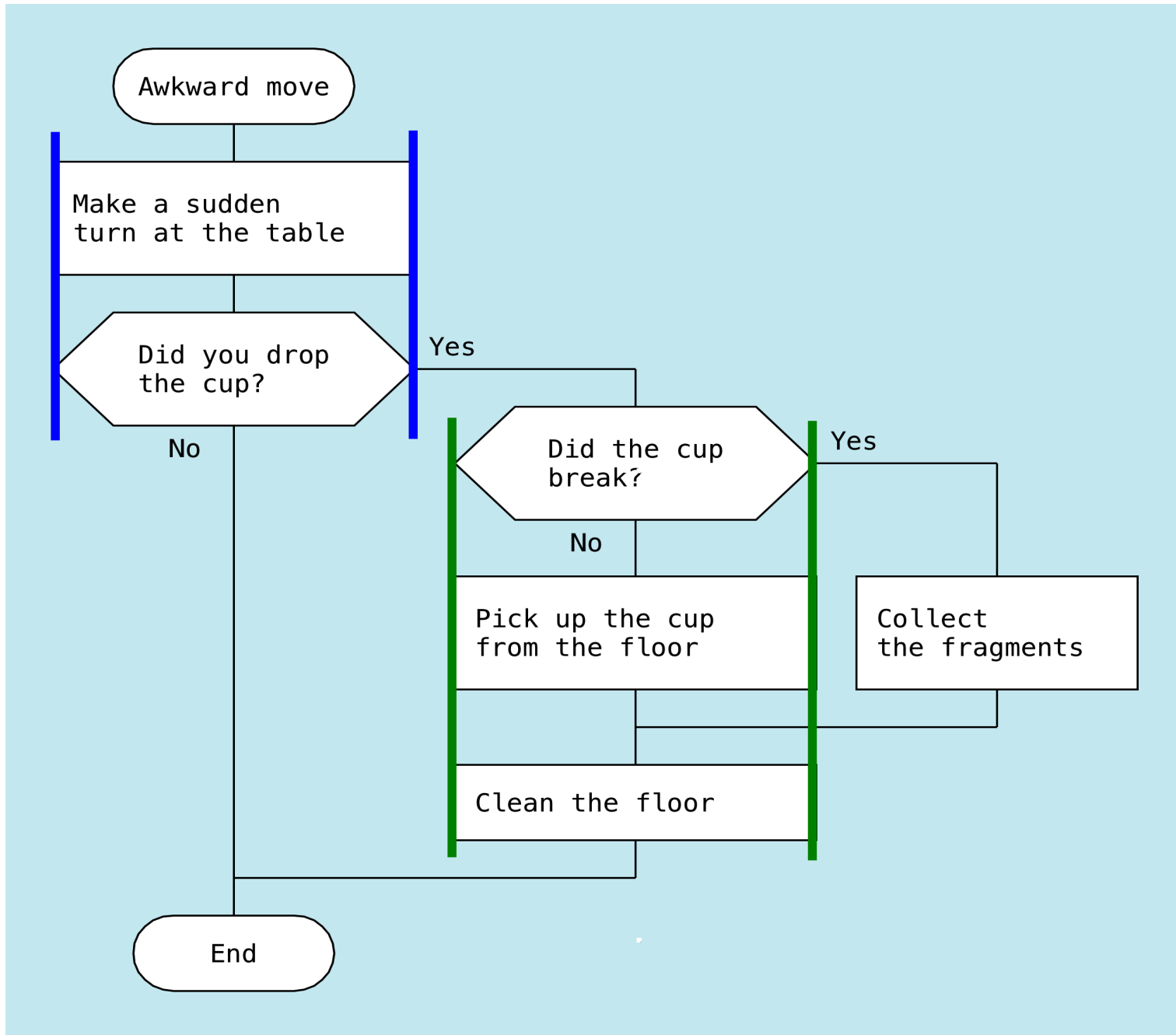
The widths of the header and the "End" icon should not be aligned with other icons

Only the icons that are part of the algorithm should be of the same width

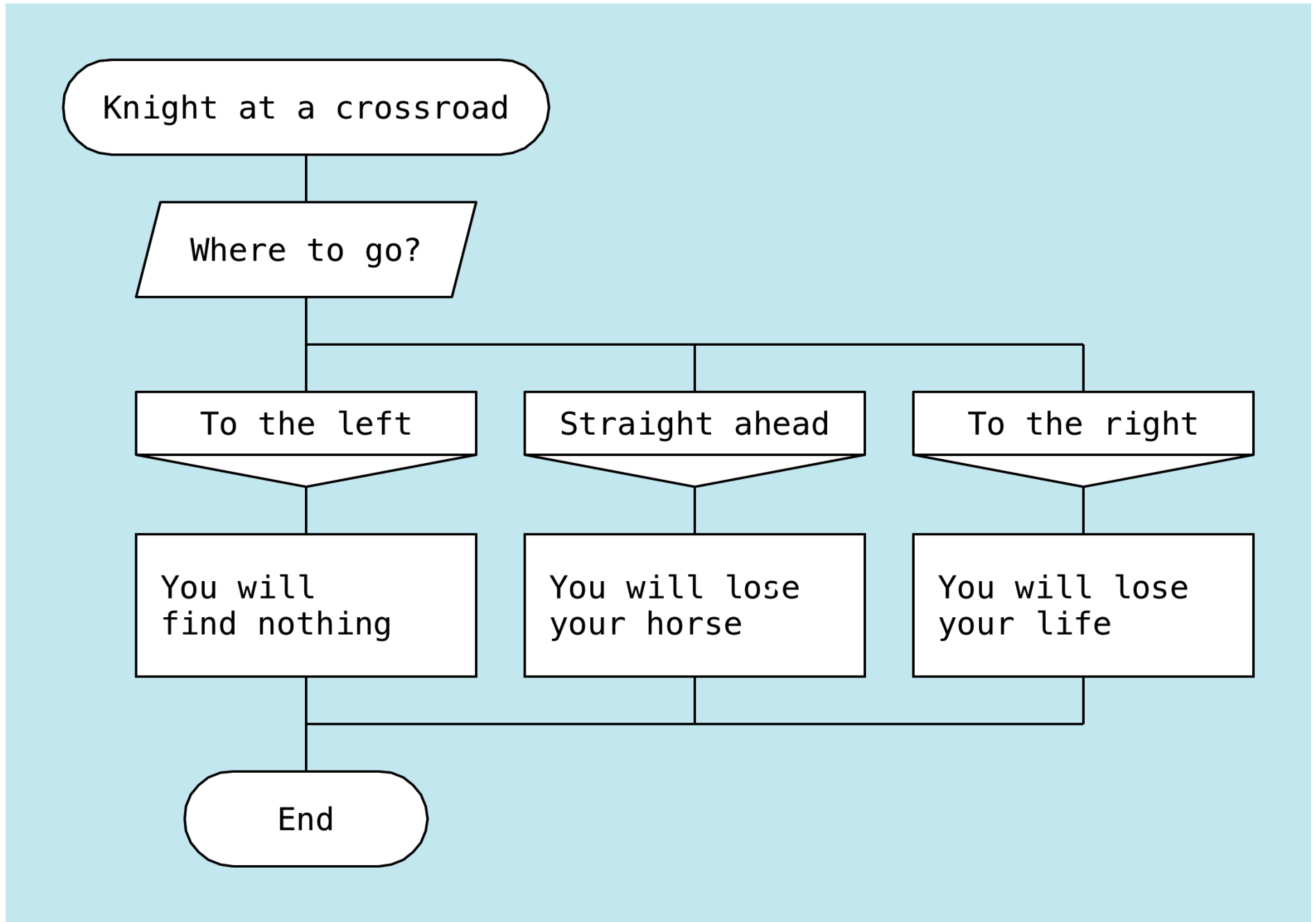
The same width of icons on a skewer



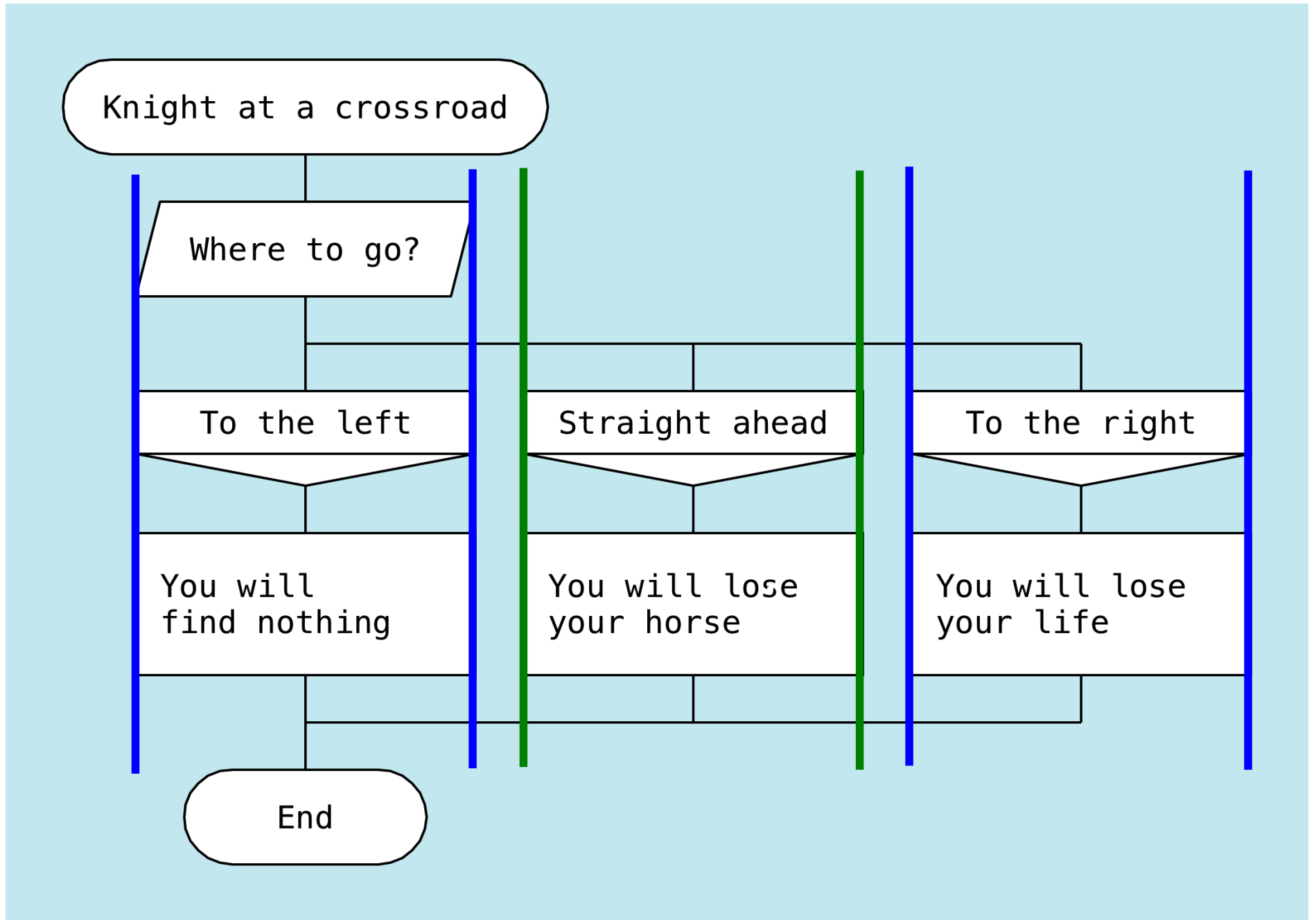
The same width of icons on a skewer



The same width of icons on a skewer



The same width of icons on a skewer



Air

is empty space between the text and
the border of the icon



Add the beaten egg
and milk



Add the beaten egg
and milk

There should be enough air,
but not too much

Оптимальное количество воздуха

Ground black pepper
into a food processor

Add the beaten
egg and milk

Ground black pepper
into a food processor

Add the beaten
egg and milk

Ground black pepper
into a food processor

Add the beaten
egg and milk

Too tight. Little air.

Too much air.

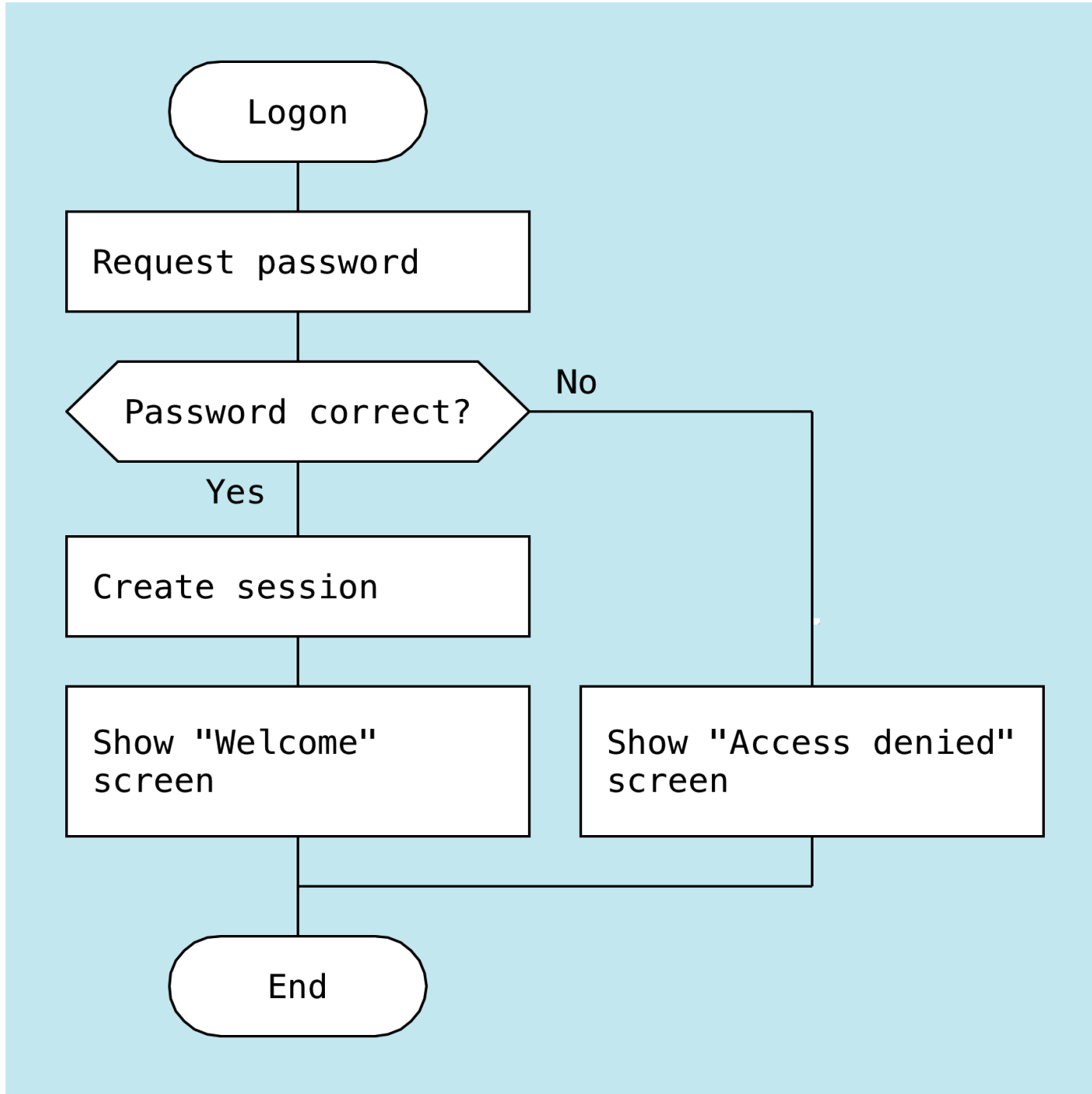
Just right.

Common fate

What is
“common fate”?

An obvious interconnection
between two or more
icons on different skewers

The "Show screen" icons have a common fate

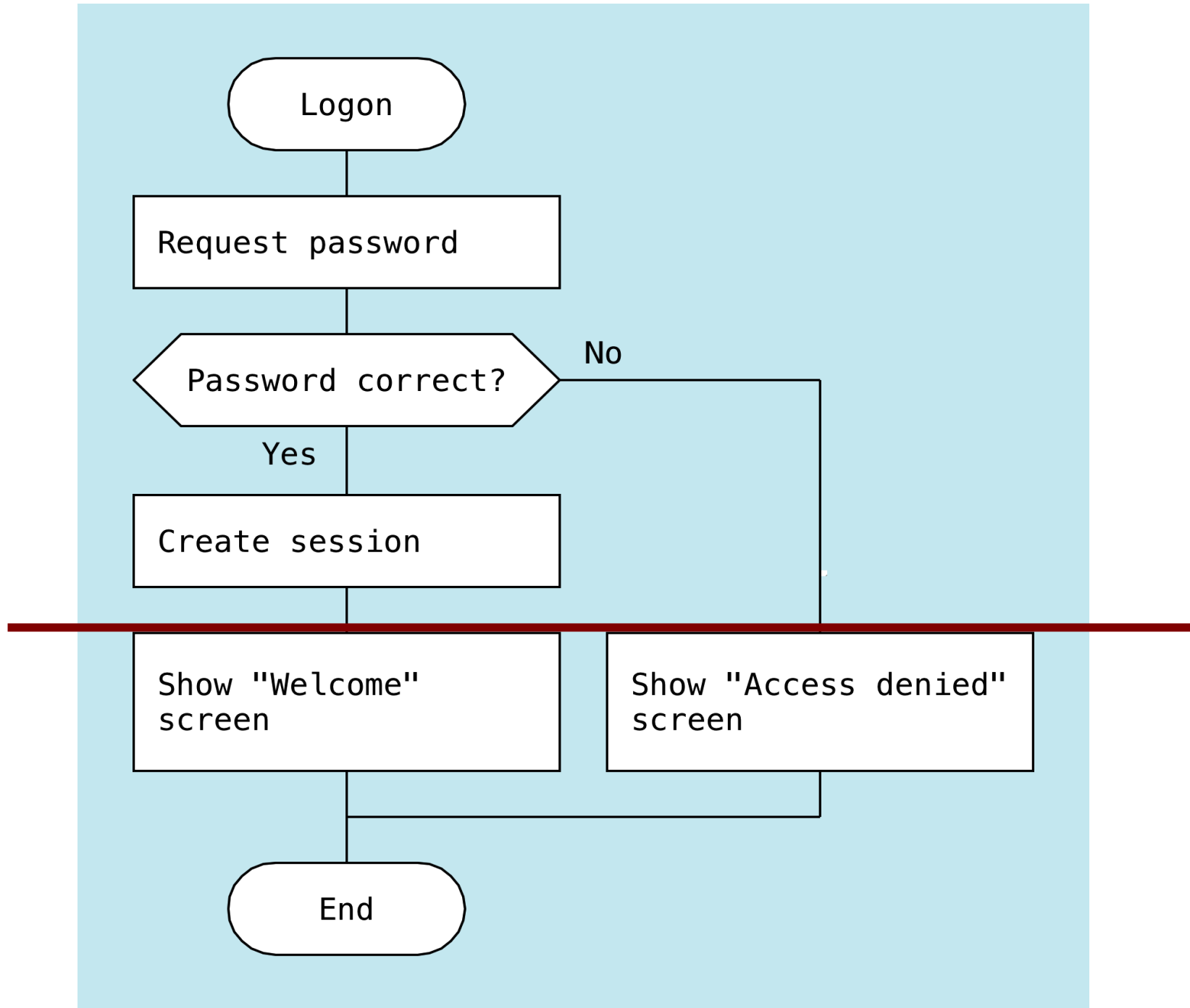


Common fate

When do icons
have a common fate?

- When they perform the same or similar action,
- but have a difference that depends on the skewer

Icons with a common fate are aligned by the top edge



Summary

Beauty techniques on DRAKON charts:

- metre
- rhythm
- same width
- air
- common fate

Summary

Beauty techniques on DRAKON charts:

- **metre**: the same distance between neighboring elements
- **rhythm**: an increased distance between silhouette branches
- **same width**: the same width of icons on a skewer
- **air**: enough space between the text and the border
- **common fate**: vertical alignment of interrelated icons

End

Stepan Mitkin

stipan.mitkin@gmail.com

The diagrams on the slides were made with
DRAKON Editor

<http://drakon-editor.sourceforge.net/>

June 2013